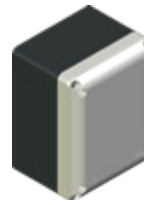
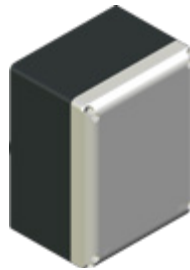




BNA...EX BNB...EX

EXPLOSION PROOF EQUIPMENT

REGOLUS EX ENCLOSURES



BNA/8NGEX

BNA/8NYEX

BNB/8NGEX





BNB/8NYEX

Material	aluminium	aluminium	aluminium	aluminium
Dimensions [mm]	150×200×110	150×200×110	105×140×85	105×140×85
Cable entry	see instruction manual for allowed number, position and type of holes			
Color	black gray	black yellow	black gray	black yellow
Ambient temperature	-60°C ... +150°C	-60°C ... +150°C	-60°C ... +150°C	-60°C ... +150°C
Resistance to impact	7 J	7 J	7 J	7 J
IP rating	IP65	IP65	IP65	IP65
	p.3	p.3	p.4	p.4

Marking

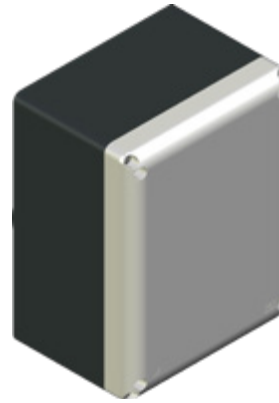


EQUIPMENT CLASSIFICATION IN ACCORDANCE WITH UTILIZATION ZONES

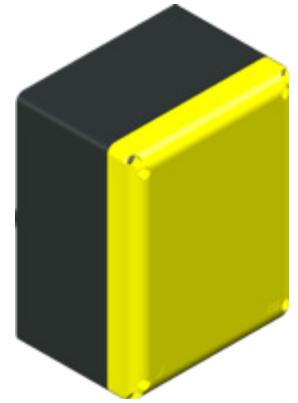
ATEX	2014/34/EU European Directive	
 0051  II 2G Ex e IIC Gb		All the models of the series are verified to be in compliance with the follows: Apparatus Category 3 G, suitable for installation hazardous areas: Zone 2 (gas) according to EN/IEC 60079-10-1.
 0051  II 2D Ex tb IIIC Db		All the models of the series are verified to be in compliance with the follows: Apparatus Category 2 D, suitable for installation hazardous areas: Zone 21 and 22 (dust) according to EN/IEC 60079-10-2.
IECEx	EN IEC 60079-0 EN IEC 60079-7 EN IEC 60079-31	
Ex eb IIC Gb		Gas
Ex tb IIIC Db		Dust
EAC Ex	TR TS 012/2011 GOST 31610.0 GOST R MEK 60079-7 GOST R MEK 60079-31	TP TC 012/2011 ГОСТ 31610.0 ГОСТ Р МЭК 60079-7 ГОСТ Р МЭК 60079-31
See IECEx scheme reference		
INMETRO	Certificate issued in according to Brazilian requirements attached to INMETRO's Rule nº. 179 issued on May 18th, 2010 nº. 270 issued on May 21th, 2011 nº. 89 issued on May 23th, 2012	Certificado emitido conforme requisitos da avaliação da conformidade de equipamentos elétricos para atmosferas explosivas, anexo às Portarias Inmetro nº. 179 de 18 de maio de 2010 nº. 270 de 21 de junho de 2011 nº. 89 de 23 de fevereiro de 2012
See IECEx scheme reference		

BNA/8NGEX - BNA/8NYEX

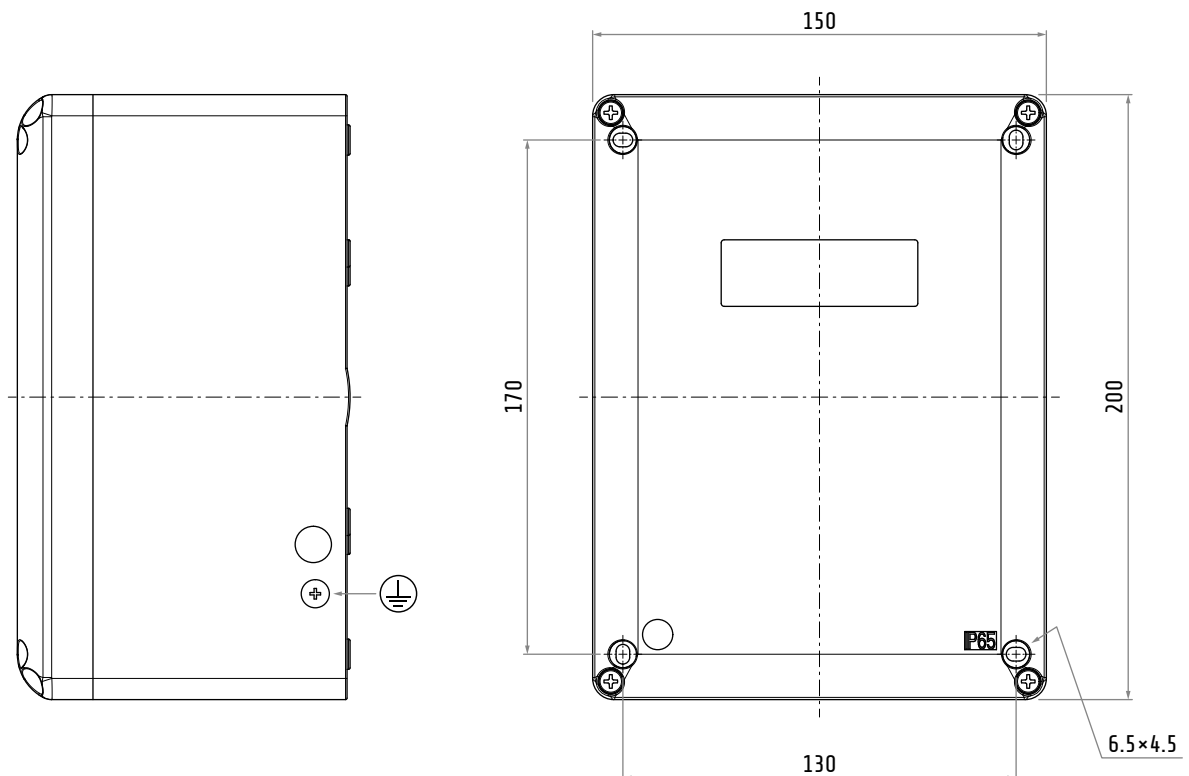
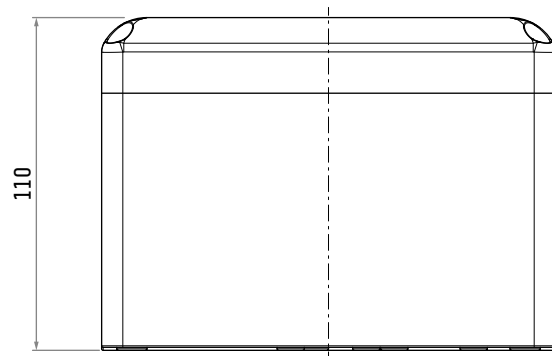
Material	aluminium
Dimensions	150×200×110 mm
Cable entry	see instruction manual for allowed number, position and type of holes
Ambient temperature	-60°C ... +150°C
Resistance to impact	7 J
IP rating	IP65



BNA/8NGEX



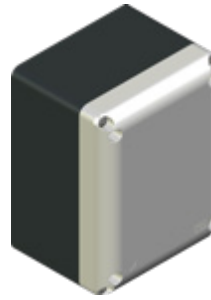
BNA/8NYEX



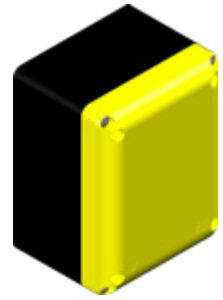
Dimensions in mm / illustrations NOT in scale

BNB/8NGEX - BNB/8NYEX

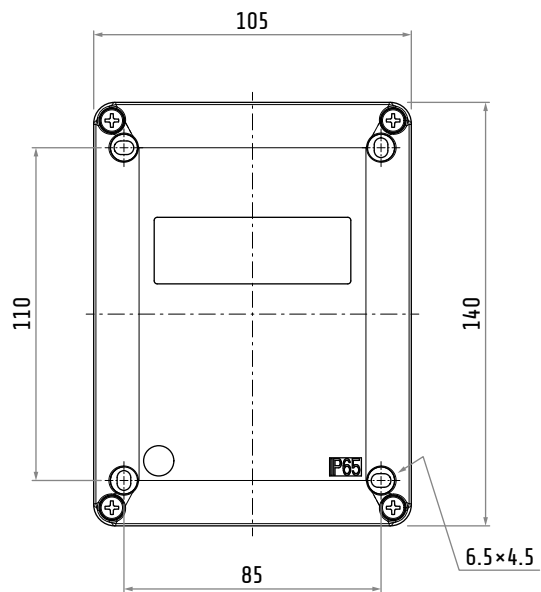
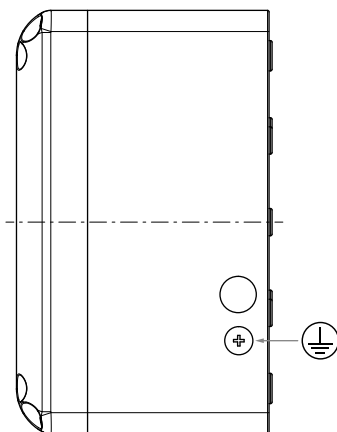
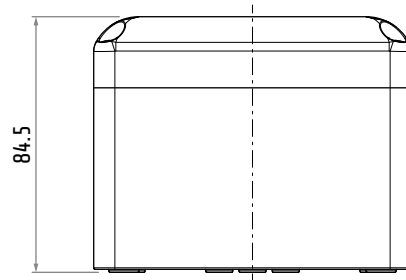
Material	aluminium
Dimensions	105×140×85
Cable entry	see instruction manual for allowed number, position and type of holes
Ambient temperature	-60°C ... +150°C
Resistance to impact	7 J
IP rating	IP65



BNB/8NGEX



BNB/8NYEX



Dimensions in mm / illustrations NOT in scale