

Water-resistant switches






SXA4 Series

Square cut out - 30X22
ENEC electrical rating up to 16A

- Dust and water penetration protection
- Double switch
- Illuminated or not
- Applications: high pressure cleaners, ironing steam generators, industrial machines, cutters

Customising on demand **Products**

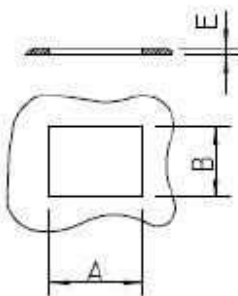
Electrical features

ENEC electrical rating up to	16A
Electro-mechanical cycles number up to	50.000
Room temperature up to	125 °C
Flammability	UL 94 V2
Heat and fire resistance	GWFI 850 °C GWIT 750 °C on demand
Contact gap	≥ 3 mm
Approvals available (to check according to the rating of each single material code)	  
Reference standards	EN 61058 UL 1054

Wiring diagrams

- Double-pole switch
- Illuminated double-pole switch

Cut out (mm)



POS.	A	B	E
DIM.	30	22	47/35
TOL.	+0.2	+0.1	

Stampa scheda