



## Push-button switches



### LITE Series

**Square cut out - 19X13**  
**ENEC electrical rating up to 16A**




- Mounting for patented rear panel
- Heat-resistant
- Illuminated customizable knob
- Applications: coffeemachines

*Customising on demand*

**Products**

**Accessories**

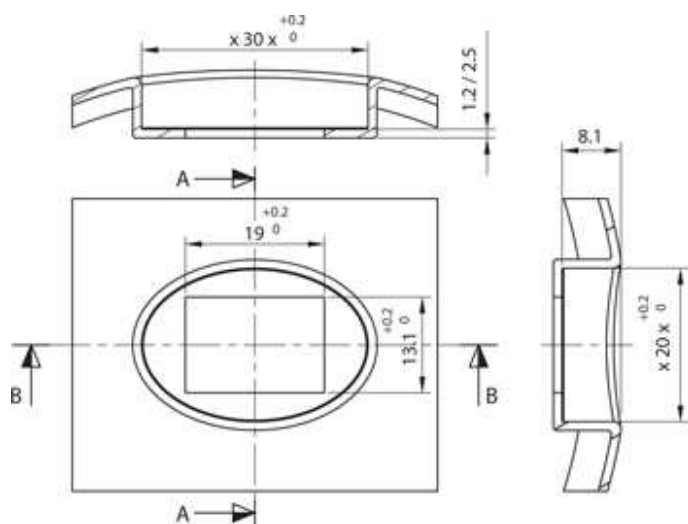
## Electrical features

|   |   |
|---|---|
| ENEC electrical rating up to  | <b>16A</b>  |
| Electro-mechanical cycles number up to  | <b>50.000</b>   |
| Room temperature up to  | <b>125 °C</b>   |
| Flammability  | <b>UL 94 V2</b>   |
| Heat and fire resistance  | <b>GWFI 850 °C</b><br><b>GWIT 750 °C</b>  |
| Contact gap   | <b>≥ 3 mm</b>   |
| Approvals available (to check according to the rating of each single material code) | <br><br> |
| Reference standards   | <b>EN 61058</b><br><b>UL 1054</b>   |

## Wiring diagrams

- Double-pole momentary switch
- Double-pole switch
- Illuminated double-pole switch
- Single-pole switch

## Cut out (mm)



Stampa scheda